



# StressCheck™

Helping address the health effects of Stress,  
one person at a time.

Stress is a silent killer...

Stress leads to inflammation

which leads to long-term impacts in your body ...

*We shine a light **before symptoms** emerge.*

Most importantly ...

There are **two** dimensions of stress:

1. Load *(what we feel and acknowledge)*
2. Sensitivity *(how our body is responding silently)*

Providing a **quantitative** solution...

StressCheck™ uses 30 **research validated** expressions  
to indicate *both* your **Load** and **Sensitivity** to Stress,  
*powered by our neural network AI engines.*

Stress effects are different for everyone...

Some people might feel

*high* stress **loads** are positive...

some may be **sensitive** to *any* stress.

Find out for Yourself...

StressCheck™ asks a set of 30 questions,  
**using everyday language** and applying AI to identify  
how much **Load** and **Sensitivity** your body is storing.

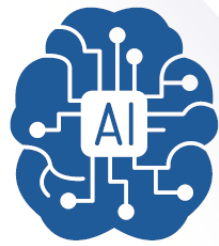
# Secure *StressCheck*<sup>TM</sup> AI provides Immediate Insights



Secure User Interface

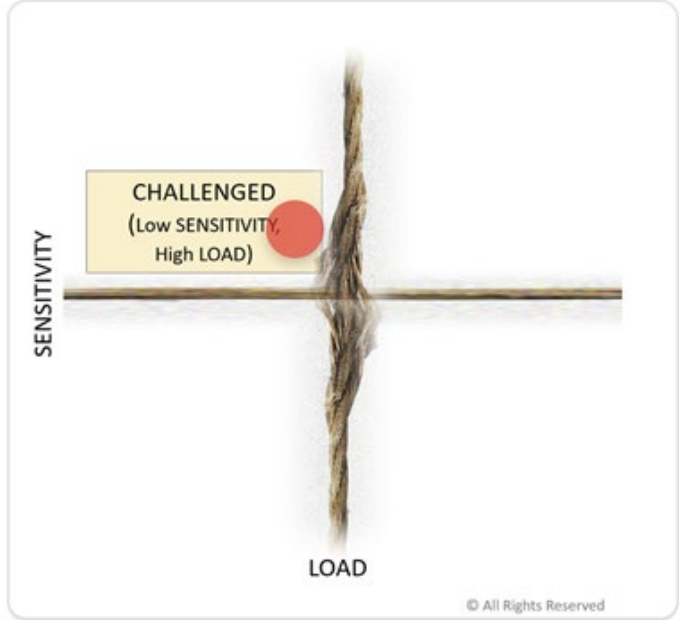
Secure APIs

Secure AI Neural Engines



Secure aiBrain<sup>TM</sup>

## Your StressCheck<sup>TM</sup> Results



Sensitivity = 41% Load = 62%

# StressCheck™: Here's what you do...

**1** Enter Code and ID, from your healthcare provider

StressCheck™ - Stress Detection

Enter Code

Your ID

**2** Answer all 30 questions, based on your past week

IN THE PAST WEEK, have you felt:

	Not At All			A Lot
...calm?	<input type="radio"/>	<input type="radio"/>	<input type="radio"/>	<input type="radio"/>
...strained?	<input type="radio"/>	<input type="radio"/>	<input type="radio"/>	<input type="radio"/>

**3** After answering all the questions, click **“Done”**

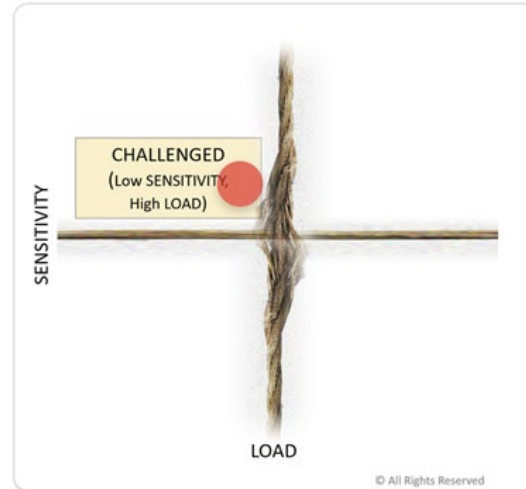
Click the button below after you've answered each question...

Done

# StressCheck™: Here's what will happen...

**4** You will **see your results immediately**

Your StressCheck™ Results



Sensitivity = 41% Load = 62%

**5** *(Optionally)* **follow-up to discuss results** with a healthcare provider